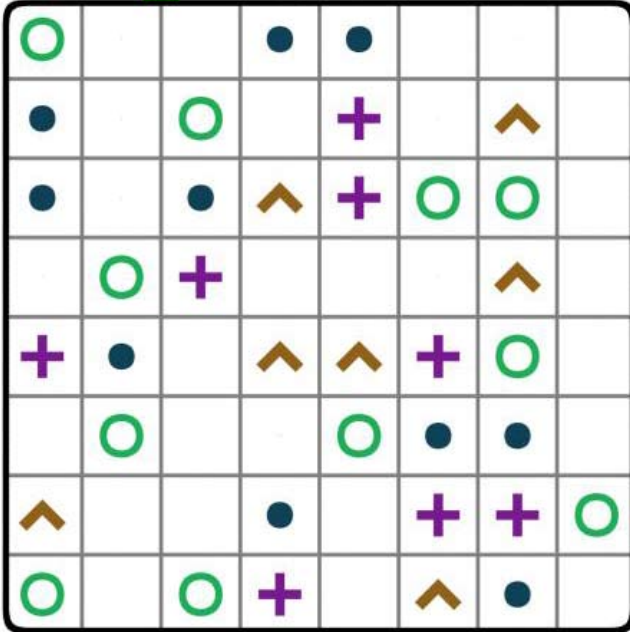


How does it work? Fill the grid entirely with the 4 symbols so that **each row and each column** contains **each symbol twice**. Singles and Duo's of the **same symbol don't touch!**

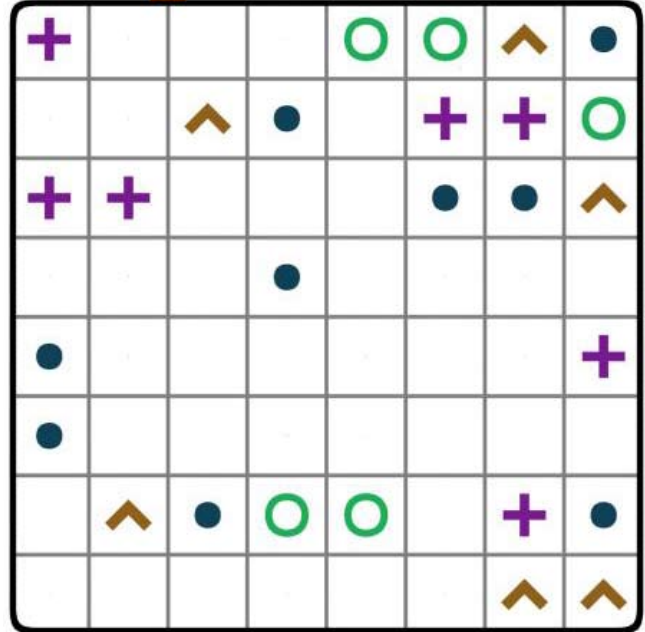
Comment ça marche? Remplissez entièrement la grille avec les 4 symboles - afin que **chaque ligne et chaque colonne** contienne **2 fois chaque symbole**. Les Seuls et les Duo's du **même symbole ne peuvent pas se toucher**.

Hoe werkt het? Vul het rooster aan met de 4 symbolen zodat **alle rijen en alle kolom, elk symbool 2 keer** bevat. Singles en Duo's van **hetzelfde symbool** mogen **niet raken!**

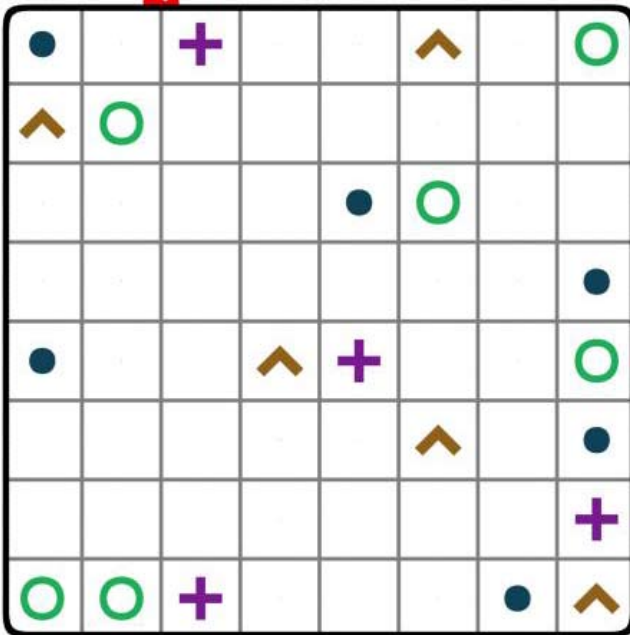
005 2 EASY



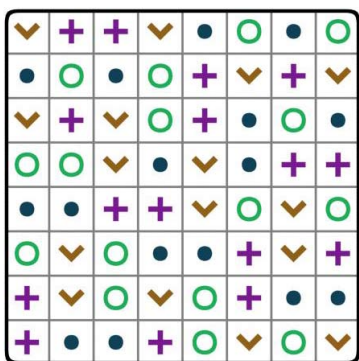
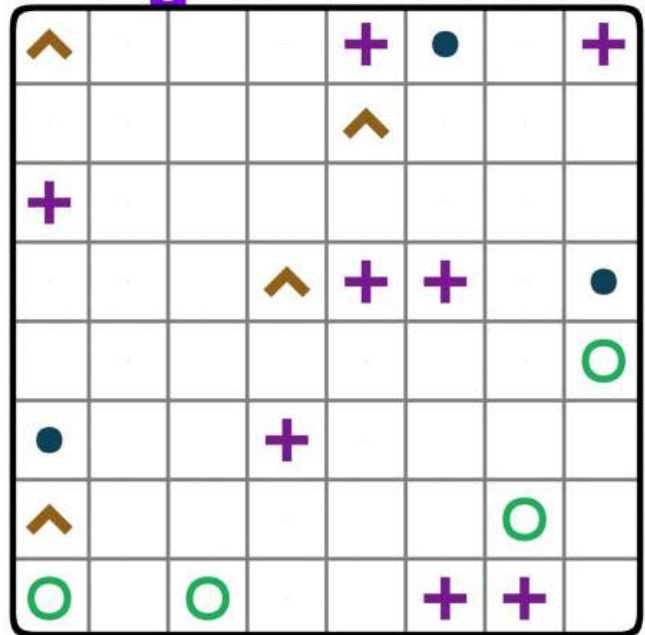
006 3 MEDIUM



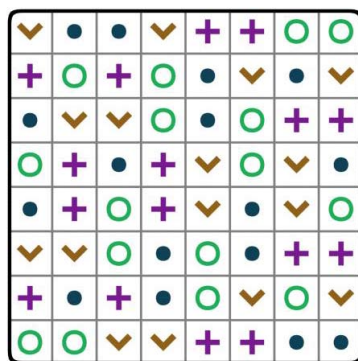
007 4 HARD



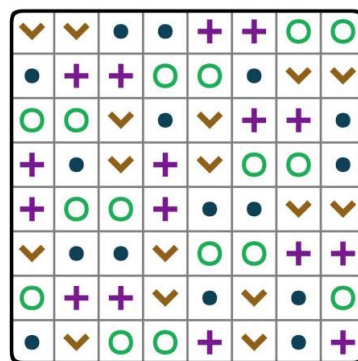
008 5 VERY HARD



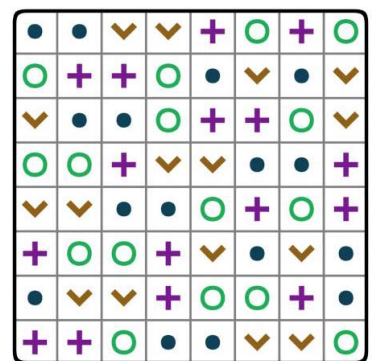
800



200



900



900